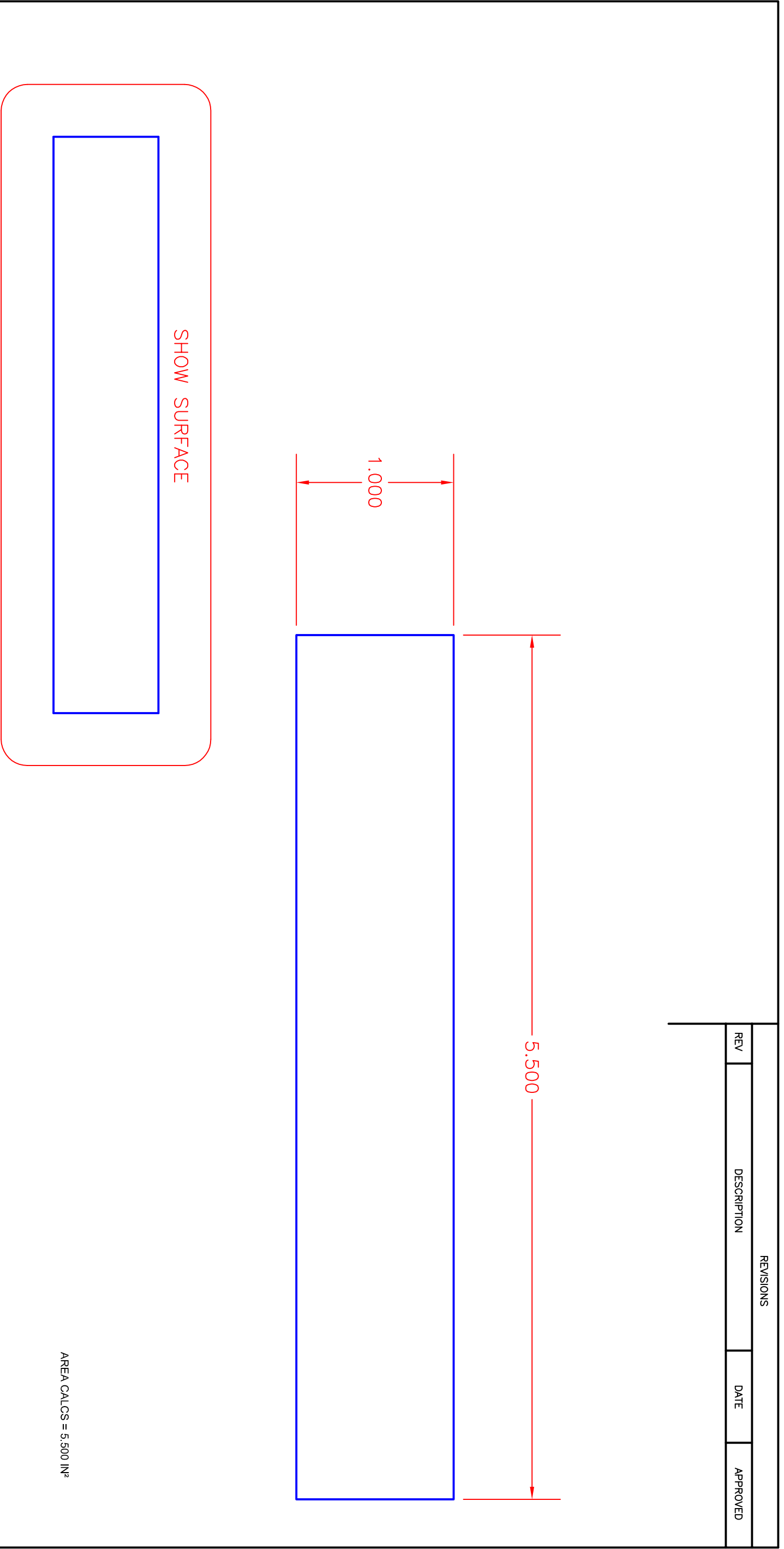






REVISIONS			
REV	DESCRIPTION	DATE	APPROVED



SIGNATURES		TOLERANCES	
DRAWN	DATE		BOW TOLERANCE: +/- .375" OVER A DISTANCE OF 6"
CUSTOMER APPROVAL			SKI TOLERANCE: +/- .500" OVER A DISTANCE OF 6"
FINAL APPROVAL			CUP TOLERANCE: +/- .030"
		ALL TOLERANCES MEASURED IN INCHES	
		ALL TOLERANCES: +/- .030 UNLESS OTHERWISE SPECIFIED	
 GOSSEN MOULDINGS <small>INNOVATIVE • SUPERIOR • GUARANTEED</small>		1" X 5 1/2" BOARD	
2030 W Bender Rd. Milwaukee, WI 53209 (414) 228-9800		SIZE B SCALE 1.5:1 QUOTE DATE 01-10-2005	DRAWING P-0768 DRAWN BY K. KATZNER REV A
<small>THIS DOCUMENT AND DESIGN ARE THE PROPERTY OF GOSSEN CORP. UNAUTHORIZED USE, REPRODUCTION OR DISCLOSURE IS PROHIBITED WITHOUT PRIOR WRITTEN CONSENT</small>			